

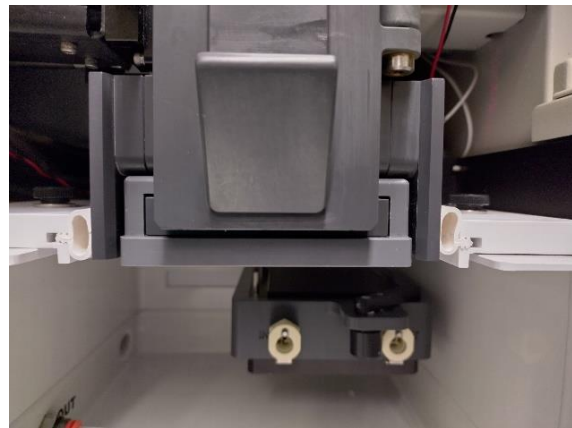
General note

Plate sorts are not part of the basic sorter training curriculum. If you are running plate sorts for the first time, please do not hesitate to contact facility staff for advice.

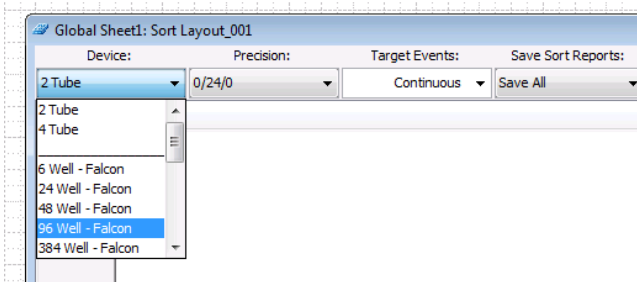
Prepare the sorter for a plate sort.

It is recommended to set up the instrument for the plate sorts after the drop-delay calibration.

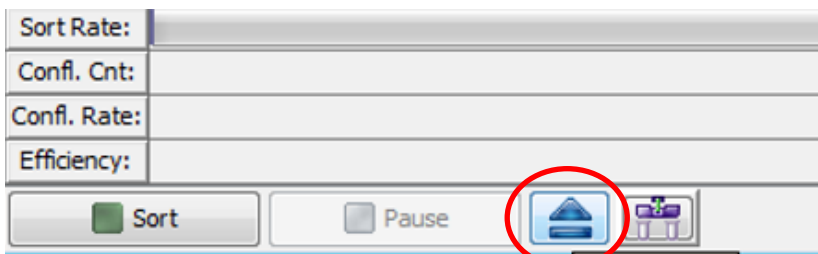
- Remove the collection tube holder and insert the ACDU adapter. Ensure that the droplet hole is on the left side of the adapter, as shown in the pictures.



- Select the correct well plate format in the Sort Layout.



- The ACDU can be ejected/loaded by the blue arrow within the Sort Layout.



- Move the ACDU in the loading position and place your plate with the lid on top and the A1 well in the upfront-left position. This will later enable plate calibration and verification of the sorting accuracy. Ensure the plate is not tilted and secured by the spring-loaded lever.

